

An abstract painting featuring a central sunburst shape in vibrant orange and red. Inside the sunburst is a simple, stylized drawing of a child's face with closed eyes and a smile. The background is composed of large, overlapping, textured shapes in shades of blue, purple, and brown, resembling a mosaic or a close-up of a textured surface.

ARTS ACCESS VICTORIA
222 BANK STREET, SOUTH MELBOURNE 3205
VOICE 03 9699 8299 FAX 03 9699 8868
EMAIL INFO@ARTSACCESS.COM.AU
WEBSITE WWW.ARTSACCESS.COM.AU

**ARTS ACCESS VICTORIA IS SUPPORTED BY
ARTS VICTORIA, AUSTRALIA COUNCIL FOR THE
ARTS AND DEPARTMENT OF HUMAN SERVICES**

art. for every body.

ANNUAL REPORT
2010 / 2011



ARTS ACCESS VICTORIA

Chair's Report

This year has seen the realisation of an important goal for Arts Access Victoria; the establishment of the Emerald Hill Inclusive Arts Hub.

An Australian first, the Emerald Hill Inclusive Arts Hub is the result of a collaboration between Arts Access Victoria and Auspicious Arts Incubator, Australia's only Arts Incubator dedicated to building the capacity of small independent artists and arts organisations. Together, we have established a partnership built on the principles of social inclusion and universal access in which a passion for the arts is the only prerequisite for involvement. Through the Inclusive Arts Hub, we will foster new collaborations between independent artists with and without disabilities, breaking down barriers and realising creative potential. With a renewed commitment to capacity building within the arts, community and disability sectors, the Board has been keen to see Arts Access Victoria's new home embody this strategic vision.

I would like to take this opportunity to extend our appreciation to all our funders and supporters, without whom we would not be in a position to progress the many aspirations of people with a disability. I would also like to thank our dedicated team of staff and volunteers, who embrace all of the challenges we set with enthusiasm, a passion for change, and a commitment to lead in everything we do. In particular, I would like to acknowledge the contribution of our Board Directors, particularly those retiring after many years of dedicated leadership: John Callahan, Bin Dixon-Ward, Paul Dunn and Marion Webster; and give a big thank you to our Executive Director Veronica Pardo.

Executive Director's Report

Over the past 12 months, Arts Access Victoria has focused on representing the needs and aspirations of our sector to government and other stakeholders. Our advocacy stems from two fundamental beliefs: that the work of artists with a disability presents a unique opportunity to extend and transform creative capital and that the inclusion of people with a disability as artists, audiences and arts workers is not only important for those individuals, but fundamental to us all. We have done this together with many partners, and it is this collaboration that best defines our achievements during this period.

To that end, we have worked tirelessly to consult and communicate key messages to all stakeholders in policy submissions, campaigns, training, consultation and most importantly, through the delivery of more than 100 arts and cultural initiatives that position artists with a disability at the centre of our practice. In particular, I would like to note three major achievements; the Action on Cinema Access Campaign, which has resulted in unprecedented investment by industry in improvements to cinema access and set new international benchmarks; the National Arts and Disability Strategy campaign, undertaken in partnership with Arts Access Australia, which set out the arts and disability sector's response to the strategy and builds the case for the investment of \$24 million towards its goals and finally, the Victorian Election Campaign, which engaged hundreds of stakeholders from the arts and disability sectors and established the foundation for reform of funding of our sector in the coming years.

I would like to thank all those who participated in these campaigns; your voice is instrumental in building the case for investment and reform.

I would also like to thank our amazing collaborators; our project artists and participants, our Board, staff and volunteers, our funders and supporters. As you look through this report, you will see a glimpse of the work they have done this year, all of which breaks new ground and provides unquestionable evidence that our practice is rich terrain for a creative and inclusive community.

Access Program

The 2010-11 year has been one characterised by transition and positive change for the Access Program involving the cessation of the EASE ticketing program in 2010, significant staff changes and emerging new directions.

Immediately prior to June 2010 the Access Program oversaw the review of the EASE ticketing program. With the support of Arts Victoria, Arts Access Victoria engaged the services of Social Ventures Australia to review the program. The outcomes of the review recommended that there be a refocusing of the existing EASE model. Central to the shift in access services was a planned emphasis on building capacity both for artists/ audiences with disability, and the arts industry. This reorientation came into effect from 2010. To support this shift, the Access Program supported members to adjust to the changes, particularly in the area of ticketing. A twelve month transition (including one year free membership) was successfully implemented, that saw members engage with Arts Access Victoria beyond EASE.

One of the key changes in direction emanating from the EASE review was a new focus of the Access Program on increasing participation in, and demand for, accessible performances by people with disability (for example Auslan interpreted performances), and on driving systemic change in the arts industry to improve access.

Industry development is emerging as an essential part of the Access Program's activity. Strategic in nature, it has a longer term focus, working to increase industry's understanding of arts and disability, and to strengthen the capacity of organisations to be accessible. Accessible venues and artistic programs that include artists with disability don't 'just happen'. There is generally a period of engagement with industry that includes awareness-raising of issues regarding art, disability and inclusion. To this end, the Access Program has been centrally involved in building positive relationships with industry during the last twelve months, and providing direct support for the planning and provision of inclusive venues, performances, events and festivals. Industry development is an important part of capacity building, and the team's goal is to assume a leadership role in this area.

This shift aligns with the federal government's National Arts and Disability Strategy (NADS) and the Victorian Government's 'Picture This' report. These strategic documents help to create a positive background and point of leverage for the Access Program.

The Access Program has benefited from new energy and expertise. The appointment of two new Access Development Officers in January 2010 added momentum to the Program, building on the very solid foundation of supporting people with disability attend arts events. To this end, the Access Program provided streamlined information services, including direct targeting of different disability groups in community settings. The Access Program also maintained its focus on audience development delivering support to the arts industry in areas of disability action planning, inclusive arts practice training and consultancy, advice and referral to a broad spectrum of arts agencies, festivals and venues throughout the year.

A highlight for the Access Program in 2011 was its involvement in the ADAPT project – a cross government partnership project commissioned by Arts Victoria and the Office for Disability. Through this project, an industry first, the Access Program will develop and trial an arts-specific model of disability action plan training with thirty key Victorian arts organisations. Coupled with the training, practical resources will be developed to assist arts organisations in all facets of disability action planning. These will be published and available online. The Access program will also create a separate online portal that will facilitate independent learning about disability inclusion in the arts. ADAPT is a very exciting, high profile opportunity for Arts Access Victoria that will strengthen its leadership in the sector.

Our Vision

People with a disability **creating** art, **experiencing** art and **working** in the arts.

Arts Program

For the Arts Program, this has been a year of exploring new territory and repositioning our team to deliver the aims of our strategic plan and respond to the current social and political climate. Our focus on capacity building and professional development for artists wanting to move to the next level of their practice has opened new discussions across sectors that have resulted in some extremely exciting initiatives and outcomes: Joceline Lee, Art Day South artist, and her successful Australia Council for the Arts JUMP mentorship for emerging artists; performer Ryan New developing and performing his first solo show to a full house at Signal, the City of Melbourne's new youth arts space; and Deaf Can Dance members, Anna Seymour and Elvin Lam, taking part in the Australian Dance Theatre Summer Workshops. New partnerships to support program delivery have also been established, such as those with Metlink and the NW Migrant Resource Centre, as well as collaborative partnerships with leading artistic companies like Strange Fruit.

The demand for consultation and training within our sector is growing, and the Arts Program is working to build its own capacity so it can respond to this demand more effectively. In 2010, Raw Law, our legal resource for artists with a disability, was launched by Julian Burnside who called the resource 'a masterpiece'. In 2011, we were also delighted to receive a major grant from the William Buckland Foundation to enable the building and development of our first multi-purpose, fully accessible, portable studio facility for artists with a disability which will allow us to increase our engagement with artists and communities in outer Melbourne and regional Victoria.

The year included some great outcomes from our established arts programs. Art Day South was commissioned to present a new digital work for the Gertrude Street Projection festival which won Best Live Installation Art at the Melbourne Fringe Festival. In Mental Health Week, a thought provoking exhibition by our artists was mounted at Cardinia Cultural Centre and new arts projects were developed in Wyndham & St Albans.



The Other Film Festival

The Other Film Festival has come of age. The highly successful 2010 festival was presented by Arts Access Victoria in partnership with Melbourne Museum from 25 to 29 August. Over five days the festival screened 37 Australian and international films reflecting the contemporary experience of disability. The festival provided a compelling range of accessible experiences to a diverse and enthusiastic audience, and presented what proved to be an enormously popular inaugural Deaf program, as well as an energetic series of public forums and practical workshops. From a quantitative perspective, the festival has been equally successful; the sessions attracted a record audience of 2,300 and generated unprecedented media coverage of 73 media breaks across 55 media outlets. These figures represent significant increases compared to the 2008 festival; audience numbers rose by 35% and media breaks increased by 74%. In 2010, the festival was proud to secure an invaluable media partnership with ABC Local Radio.

The Other Film Festival continues to be the most accessible festival of any kind in Australia and is now regarded internationally as the leading disability film festival in the world.



Arts Project Highlights 2010 / 2011

- Art Day South *Woodvale South*, Melbourne Fringe Festival, North Melbourne Town Hall
- Art Day South *Gertrude St Projection Festival*, Fitzroy
- Art Day South *JUMP Mentorship* awarded to artist Joceline Lee and mentor Rhian Hinkley
- *Experiencing Arts* Exploring Melbourne's visual and performing arts venues, festivals, & arts events
- *Way Out West FANZINE: The Hollidae Project*, Melbourne Town Hall
- *Get Out!* Visual & Performing Arts projects
- *What's the time Mr. Wolf?* Performance piece by Ryan New exploring the experience of Autism
- *Deaf Can Write* presented by Deaf Arts Network in collaboration with Melbourne Writers Festival
- *THE ATRIUM* Collaboration between Strange Fruit and Deaf Arts Network at 101 Collins
- *Art Making in Pakenham* as part of AAV's Mental Health Projects
- *HeartSong* City Life Cafe Frankston as part of AAV's Mental Health Projects
- *Song Writing with Heidi Everett* as part of AAV's Mental Health Projects
- *h-ART Felt* An exhibition of felted visions by the Berwick Group as part of Mental Health Week
- *Matthew Does Art* Matthew Clarke Solo Exhibition, City Library Gallery
- *Wyndham Art Workshops* Tarneit Community Learning Centre
- *Glen Eira Exhibition* Hume Global Learning Centre
- *The Song Book* A collection of artwork and original music by Royal Avenue SRS
- *Footscray House Exhibition* Footscray House SRS, Barkly Arts Centre
- *ARTSTOP 21* Workshops in Art and Artist Talks, The Olive Way Brunswick
- *THE HAUNTED CIRCUS* A performance created by members of the AAV Wyndham program

Our Supporters

We are extremely grateful to the following funders and partners, whose support has enabled our many achievements in 2010 / 2011:

GOVERNMENT PARTNERS

Arts Victoria, Australia Council for the Arts, Department of Human Services Victoria

FUNDERS

Bendigo Bank
Brimbank City Council
Cassandra Gantner Foundation
City of Melbourne
City of Port Phillip
Glen Eira City Council

Legal Services Board of Victoria
Lord Mayor's Charitable Foundation
Melton Shire Council
Victorian Office for Disability
The William Buckland Foundation

PARTNERS

Andrew Maynard Architects
Arts Access Australia
Arts Law Centre of Australia
ArtsPath Ballarat
Ausdance Victoria
Auspicious Arts Incubator
Australian Copyright Council
Barkly Arts Space
Cardinia Shire Council
City of Casey
Deaf Children Australia
Deakin University
Eastern Regional Mental Health Association (ERMHA)
Frankston Arts Centre
IMPACT
Interchange Western
Melbourne Fringe Festival
Metlink
MetroAccess & Rural Access
Middletons
Migrant Resource Centre, St Albans
National Gallery of Victoria
Peninsula Support Services
SCOPE Victoria
Signal Youth Space
Southern Health
Space Dance & Arts Centre
Strange Fruit
Tarneit Community Centre
The Olive Way
Vicdeaf
Victorian Council of Deaf People
Wyndham City Council

THE OTHER FILM FESTIVAL

FUNDERS

City of Melbourne
Melbourne Museum
Victoria, The Place To Be - The Australian
Government Department of Families, Housing,
Community Services and
Indigenous Affairs (FaHCSIA)
Film Victoria
Screen Australia

PARTNERS

ABC Local Radio 774
ANZ Trustees
Captioning Services International
Sweet Design
The R E Ross Trust
Federation Square
Metro
ITFC Post Production Services

SUPPORTERS

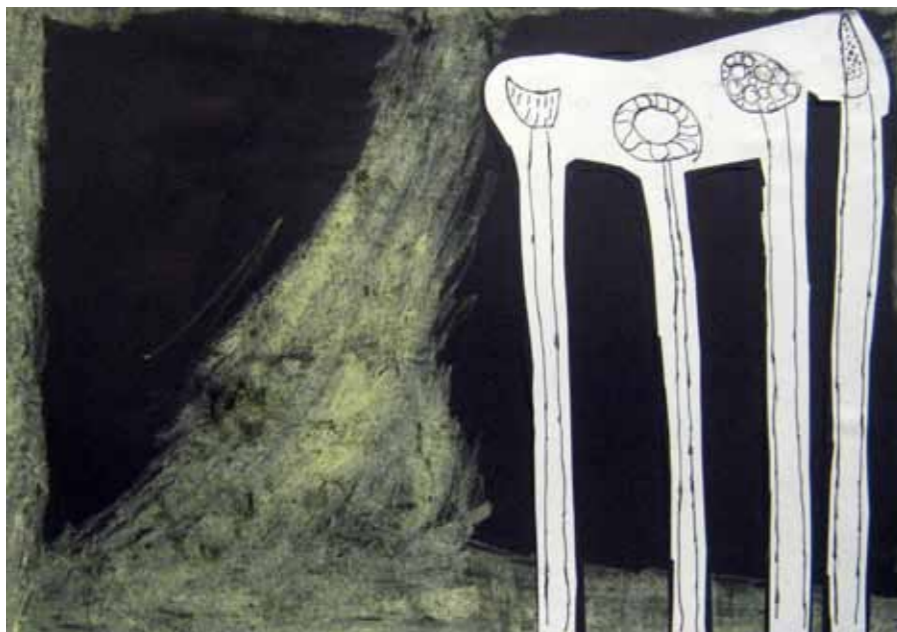
Accentuate
Charcoal Lane
Foreign Affairs and International Trade Canada
Lemac Hire
Northern Metropolitan Institute of TAFE (NMIT)
Picture Start
RUCC Business Internet Services
US Consulate
UScreen
Word of Mouth Technology

ACCESS PROGRAM PARTNERS

The Arts Centre
Asphyxia & The Grimstones
The Australian Ballet
Australian Centre for the Moving Image
Australian Chamber Orchestra
Back to Back Theatre
Bell Shakespeare
Circus Oz
Cirque de Soleil's Saltimbanco
CUB Malthouse Theatre
The Clocktower Centre
Deaf Children Australia
Dr Zhivago Melbourne production
The Drum Theatre – Dandenong
Family Dog Theatre
Frankston Arts Centre
Her Majesty's Theatre
Hoyts Cinemas
Joint Councils Access for All Abilities (JCAAA)
John Doe film production
Love Never Dies Melbourne Production
Marriner Theatres
Melbourne Fringe Festival
Melbourne International Arts Festival
Melbourne International Comedy Festival
Melbourne Recital Centre

Melbourne Symphony Orchestra
Melbourne Theatre Company
Melbourne Writers Festival
National Gallery of Victoria
Opera Australia
Orchestra Victoria
Oz Opera
RAWCUS
ROARHOUSE
St Martins Youth Arts Centre
Ticketek
Ticketmaster
Top Screen 2011
Top Designs Exhibition
Victorian Association of Performing
Arts Centres (VAPAC)
Victorian Council of Deaf People (VCOD)
VicDeaf
Victorian Opera
Village Cinemas
UNSPEAKABLE 2011
Vision Australia
Weave Movement Theatre
West Side Story Melbourne production
The Wheeler Centre
Wild@HeART Community Arts
Wyndham Cultural Centre





Our Facts & Figures

Operations

Annual Turnover	\$1,424,889
Core Staff	18 (Equiv to 10 F/T)
Project Staff	61

Arts Program

Number of Projects	52
Number of Participants	750
Number of Artists Supported	133
Number of workshops	322
Number of Attendances	1,650
Training Workshops and Forums	17
Exhibitions, Events and Major Projects	35

The Other Film Festival

Number of film entries	172
Number of screenings	37
Audience attendance	2,300
Number of regional screenings	4
Website hits	300,000

Industry & Audience Development

Access Consultancy, Advice & Referral	36
Disability Awareness Training	4
Inclusive Arts Training	10
Industry Development Projects	7

Access & Membership Program

Number of Financial members	410
Number of Events available	200
Cinema vouchers	15,428
Free Tickets	1,176
Sign-Interpreted Performances	34
Tactile Tours	12
Captioned Performances	10
Audio-Described Performances	30
Member newsletters & updates	20

Communications

Information and Referrals	15,354
Visits to www.artsaccess.com.au	150,000
Enews	24



Artist Supported & Mentoring Program

Akash Temple, Matthew Clarke, Joceline Lee, Kristy Sweeney, Andrew Follows, Asphyxia, Anna Seymour, Dawn Whitehead, Brett Reynolds, Elvin Lam, Melinda Smith, Alex Litsoudis.

Follow us on Facebook at [Arts-Access.Victoria](https://www.facebook.com/Arts-Access.Victoria) and on Twitter @ArtsAccessVic

IMAGE CREDITS

Cover: Julie Reid, Untitled, mixed media, AAV/ERMHA exhibition, Photo: Dan Cuttiford.
 Our Vision page: Woodvale South at Melbourne Fringe Festival, Photo: Paul Dunn.
 Other Film Festival page (l to r): Bill Shorten, Guest Speaker, OFF Opening Night; Adam Elliot, Festival Patron, OFF Opening Night; OFF Opening Night Party. Photos: Jorge de Araujo.
 Our Supporters page: Ryan New, *What's the time Mr Wolf?* 2010. Photo: Kent Allen.
 Facts & Figures page (from top, l to r):
 1. Spiros Skliros & Candice Jones, ink on paper collage, AAV Glen Eira program, Photo: Elyss McCleary;
 2. Alan Gerrets, print on paper, Royal Avenue SRS, Photo: Jonathan Lane;
 3. The Atrium Project, 161 Collins St, Melbourne, Photo: Strange Fruit;
 4. Kristy Sweeney, Untitled, pencil & ink on paper.
 5. Various artists, Footscray House Gallery Exhibiton, Photo: Dan Cuttiford;
 6. Sonia Gowan, Footscray House Gallery Exhibiton, Photo: Dan Cuttiford.
 Financial Perf page: Artwork by Matthew Clarke, *Matthew Does Art Solo Exhibition*, City Library Gallery



Statement of Financial Performance

For the year ended 30 June 2011

	Note	30th June 2011 \$	30th June 2010 \$
Revenue			
Department of Human Services - Core Funding	3	209,701	207,571
Department of Human Services - Project Funding		433,035	373,667
Arts Victoria - Core Funding		129,629	142,148
Australia Council - Core Funding		102,263	102,983
Other Funding		185,321	373,240
Earned Income		159,481	215,655
Other revenue		179,315	171,453
Interest		26,144	26,779
Total revenue from ordinary activities		1,424,889	1,613,496
Costs of goods sold			
Project Costs		531,877	666,834
Employee expenses		467,862	436,836
Occupancy expenses		112,223	69,090
Depreciation expenses		41,149	18,687
Other expenses		145,900	223,472
Total expenses from ordinary activities		1,423,772	1,608,366
Surplus/(deficit) from ordinary activities before related income tax expense	4	1,118	5,130
Income tax expense relating to ordinary activities		0	0
Surplus/(deficit) from ordinary activities after related income tax expense		1,118	5,130
Net Surplus/(Deficit)		1,118	5,130

The statement of financial position is to be read in conjunction with the notes to the financial statements set out on pages 6 to 13 (available online at www.artsaccess.com.au)

ARTS ACCESS VICTORIA GRATEFULLY ACKNOWLEDGES THE SUPPORT OF ARTS VICTORIA, AUSTRALIA COUNCIL FOR THE ARTS AND DEPARTMENT OF HUMAN SERVICES